

High-Speed CopyStation *Edition 1000*

for CF, microSD, miniSD, SD/MMC, RS-MMC, OTP SD/MMC, MS Micro M2, PRO Duo, PRO





High-Speed CopyStation *Edition 1000* with Memory Stick PRO Duo CardBox

High-Speed duplication of Flash memory card images

- ◆ Preinstalled system on Dell Business PC* including altec copying software under Windows XP Professional and exchangeable CardBoxes with 20 slots each**
- ◆ Ten different exchangeable CardBoxes with 20 slots are available for 13 types of mobile memory media – see reverse page
- ◆ In-house developed copy software with the same «look & feel» as all other altec CopyStations; user interface selectable for English or German; other languages are available on demand
- ◆ CopyStation's transfer rate is approx. 75 MB/s; copies 20 SD Cards with 512 MB in approx. 2½ min. (speed depends on memory card type)
- ◆ Including **new software** feature "Short Verify"; this feature can be used for a fast function test after the writing process
- ◆ Including *Edition 1000* software "Short Image Files" for creating and copying short image files; with this, memory cards where much less data is stored than the actual storage capacity permits can be programmed much quicker
- ◆ Including *Edition 1000* software "File Copy"; allows you to copy a specific file or directory to storage media, which are supported by Windows
- ◆ Software option for parallel verification
- ◆ Optional software interface for data exchange with external applications to allow customization of individual cards, e.g. serialization or data encryption
- ◆ Software option to set a temporary or permanent write protection flag on SD Card or MMC

Product Highlights

- Including *Edition 1000* software "Short Image Files" and "File Copy"
- Modular designed with exchangeable CardBoxes
- Ultra fast duplication of content with approx. 75 MB/sec
- Unique software options
-   and  ready

24 Months Warranty


High-Speed CopyStation	Item no.
High-Speed CopyStation Ultra w/o CardBox (Engl. WinXP, keyboard)	B32AL188E
CardBox CompactFlash Type I	B31AL157
CardBox microSD & microSDHC	B31AL162
CardBox miniSD & miniSDHC	B31AL158
CardBox SD & SDHC Card, MMC	B31AL137
CardBox RS-MMC	B31AL156
CardBox OTP SD/MMC 3.7V	B31AL159
CardBox OTP SD/MMC 3.7/12V	B31AL160
CardBox Memory Stick Micro M2	B31AL164M
CardBox Memory Stick PRO Duo	B31AL164D
CardBox Memory Stick PRO	B31AL164PRO
Software Parallel Verification	31AL2001
Including <i>Edition 1000</i> software Short Image Files and File Copy	31AL2011
Software interface for e.g. external serialization	31AL2004
Software OTP support	31AL2005
Software Write Protect SD/MMC	31AL2006

Technical Specifications

RoHS COMPLIANT 2002/95/EC

Hardware		Power Requirements	
– Interface	IDE	– DC Input Voltage	5 Volt ±5%
– Slots per CardBox	20 slots respectively contact pads	Environmental Specifications	
– Case	Standard 5¼" internal drive and exchangeable CardBoxes	– Humidity	10% to 90%, non-condensing
Performance		– Temperature	+10° to +35°C (operating) –40° to +65°C (non-operating)
– Data transfer rate	ca. 75 MB/s; 20 SD Cards à 512 MB in ca. 2½ min. (depending on cards)	Software	
		– Supplied OS	Windows XP Professional

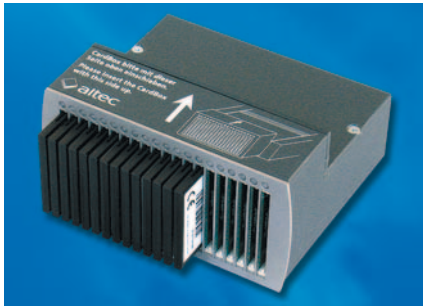
altec ComputerSysteme GmbH
 Bayernstr. 10 · 30855 Langenhagen · Germany
 Phone +49-511-9 83 81-0 · Fax +49-511-9 83 81-49
 eMail: info@altec-cs.com
 Web: www.altec-cs.com

ISO 9001:2000 certified 

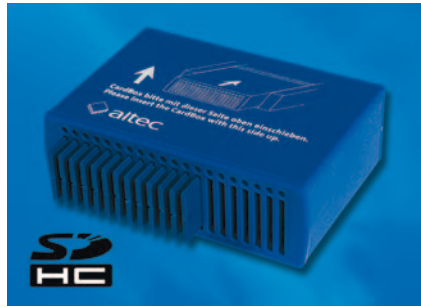
 **altec**
card copy machines

Technical data subject to change without prior notice. All brand and product names are trademarks of their respective owners. *Dell support in your own language and country. © 2008 altec ComputerSysteme GmbH. Version >H-S_Copy_Ultra_e23_edition000x>10/08< ** Correct functioning only guaranteed in a PC configured by altec. Support for copying hard- and software by altec.

Additional information on the High-Speed CopyStation Ultra



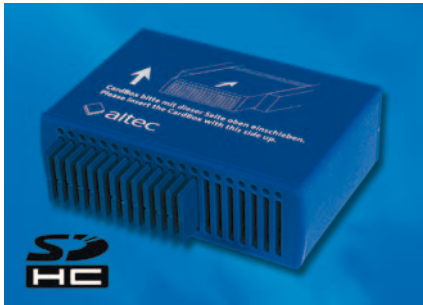
CompactFlash CardBox for CF Type I – B31AL157



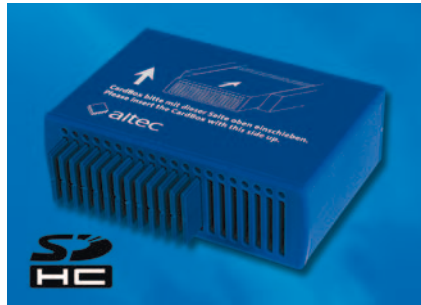
SD & SDHC Card and MMC CardBox – B31AL137



miniSD & miniSDHC CardBox – B31AL158



OTP SD/MMC CardBox 3.7 Volt – B31AL159



OTP SD/MMC CardBox 3.7/12 Volt – B31AL160



RS-MMC CardBox – B31AL156



Memory Stick Micro M2 CardBox – B31AL164M



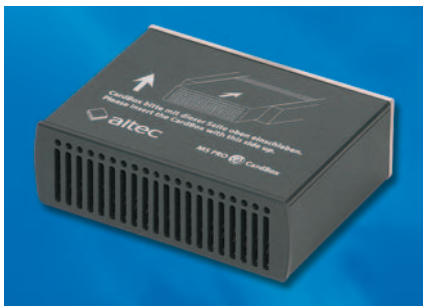
microSD & microSDHC CardBox open – B31AL162



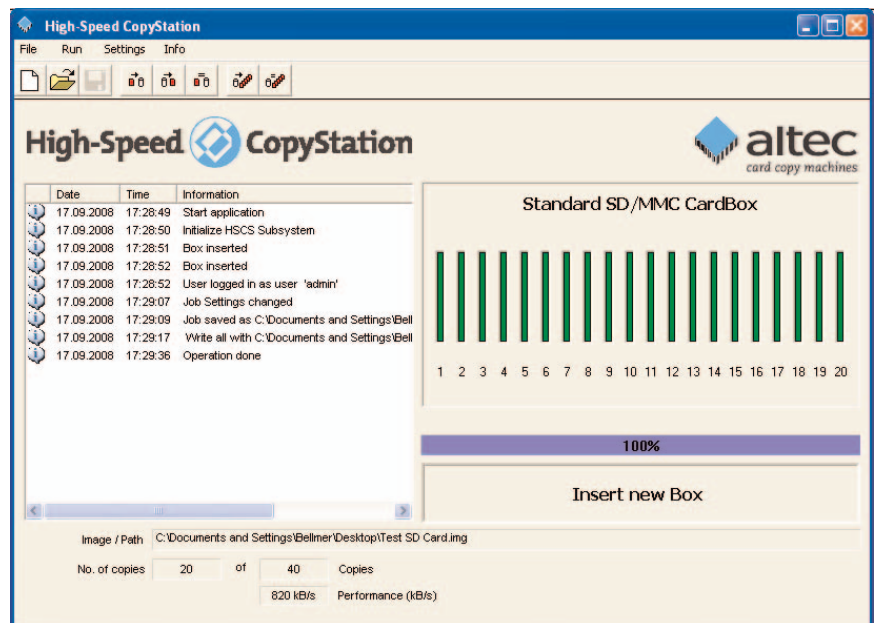
Copy module made from stainless steel in combination with the steel back side of the CardBoxes prevents electrostatic discharge



Memory Stick PRO Duo CardBox – B31AL164D



Memory Stick PRO CardBox – B31AL164PRO



High-Speed CopyStation Software